



Westbury Area Board

Hello and welcome to this Community Policing Team report.

It has been another challenging time for Police all over the Country. Following on from the traumatic events London and in Manchester we are sadly all reminded of what devastation can be brought upon any of us at any time. But even in these difficult times what shines through is that the entire policing family and the fabulous public we serve are all able to work together to keep our communities strong and to support each other. Our thoughts are with all the family and friends of those who have been affected by the tragic loss of lives in both of these major cities.

We cannot highlight enough the importance of communities coming forward with information on suspicious activity which could be linked to terrorism. If you see or hear anything that could be terrorist related, act on your instincts and call the police, in confidence, on 0800 789321 or visit www.gov.uk/ACT

Here in Wiltshire we placed Armed Police Officers in some of our more prominent locations, Salisbury being one of them, to reassure you all that we are here and will continue to do all we can to keep you safe.

Moving forward, June will mark the start of the Summer Drink Drive campaign. Sergeant Gavin Brewster of the Wiltshire Police Roads Safety Unit said "With support from the public, our aim is to reduce the number of people who even consider getting behind the wheel whilst under the influence of drink or drugs".

Nearly one in five people who are convicted of drink driving are caught the morning after and do not realise that they can lose their licence if they are over the legal alcohol level. Taking the risk is a big one, you potentially risk peoples' lives and can receive a fine of up to £5000, a minimum 12 month driving ban and a criminal record.

Please plan ahead and if you are going to drink then arrange for alternative transport, it is never worth the risk.

feedback@wiltshire.police.uk

Calls to 101

A frequent complaint we receive is that our 101 Call handling for Wiltshire remains below the standards we wish to deliver.

There has been a significant shift in the way we manage our demand within the Police Service. The Community Policing Model recognises that the Police service is being asked to do more with less and helps to address this fact by resolving the problem at the first point of contact, whilst assessing the Threat, Harm and Risk associated with the contact without necessarily tasking an officer to attend in the first instance. The adage they work to in our Communication Centre is to get it right first time. Consequently, by doing more initially, this has seen an increase in waiting times for people to be answered. There are several factors that need to be considered here.

The first point is that under the CPT Model, calls for immediate help have seen an improvement. If calls were answered quicker and pushed through the system, this would not be the case. I hope this point is accepted as being the right stance.

The second point is that we have gone through, and continue to go through, a significant recruitment phase for many roles within the CPT. Police Officers, PCSO, Local Crime Investigators and Prisoner Transport Team members have all been recruited. Where do we find people with the right skills to do these roles? One area is our Communication Centre. These are members of Police Staff who have been trained in aspects of law and have good communication skills. It is not surprising that they then wish to use their training and continue to develop. Consequently recruitment and retention of staff is a significant factor, however to reassure you our Communication Centre Leadership team have a well-established rolling recruitment programme in place.

We are aware of the issue and exploring solutions including on-line reporting of crime, a more informative website and on-line chat and hope this different access channels will start to be available late summer 2017. We will not solve this issue overnight but are aware of our failings and are working hard to resolve them in order to deliver the best possible service to those who contact us. We hope this helps to put context to the current issues we are experiencing with the 101 system

Thank you for your continued support to Wiltshire Police.

Please follow us on:

Twitter <https://twitter.com/wiltshirepolice>

Facebook <https://www.facebook.com/wiltshirepolice/>

Or sign up to Community Messaging <https://www.wiltsmessaging.co.uk/>

COMMUNITY MESSAGING

Working with our local communities, we have been developing ways to reach out to all our communities and keep everyone up to date with the latest information that matters to you in your area.

Through feedback and working with our local communities, we have developed the use of <https://www.wiltsmessaging.co.uk/> and are now sending out daily updates around crimes that matter to you in your area. This is enabling us to reach as much of our community as possible, as

feedback@wiltshire.police.uk

quickly as possible and impart any new crime prevention advice or information about incidents that may affect you in your community that we feel you need to know about.

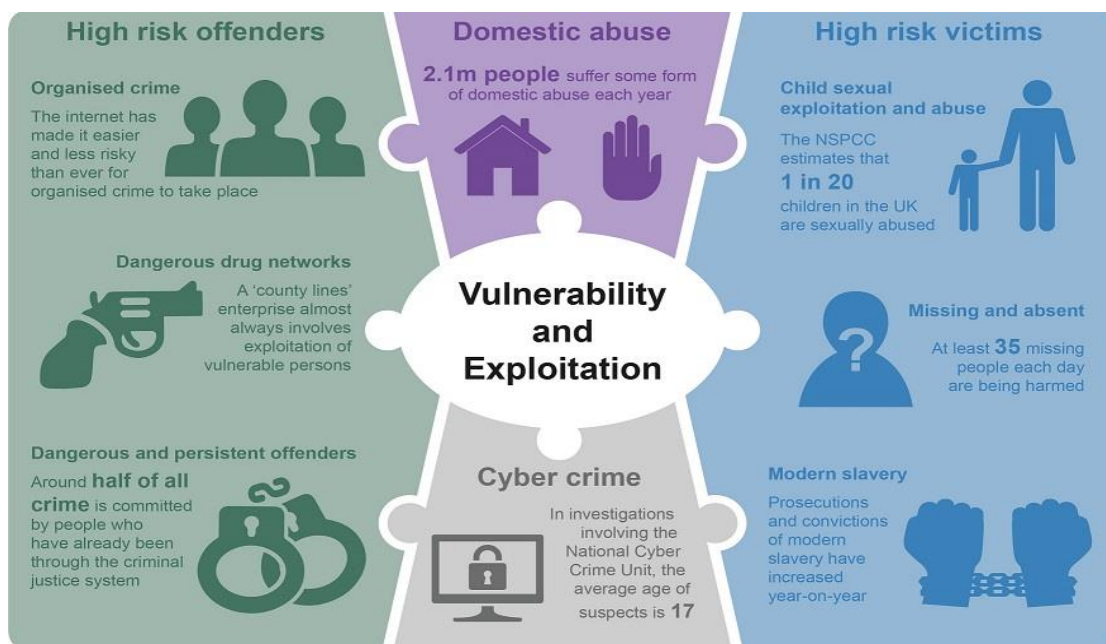
We have received some very positive feedback around this and encourage you to speak to all members of your community and encourage them to sign up to Wiltshire Messaging. It is free and a very good way of keeping all our communities connected.

<https://www.wiltsmessaging.co.uk/>

CONTROL STRATEGY

Below is our control strategy for your reference. This focuses on where how we conduct our operational Policing based on the Police & Crime Plan. We will continue to align our resources with the threat/harm/risks presented in line with the control strategy.

- Domestic abuse / Cyber Crime / High risk offenders / High risk victims



CURRENT SECTOR SERIES/ Exceptions

Crime Exceptions are where the volume of crime exceeds the levels we would expect over a specified period. This is based on evaluation of data, over like to like periods historically.

The comparison database that is usually used for this data is currently unavailable, so we have had to rely on an alternative database so the results will be slightly different

feedback@wiltshire.police.uk

Westbury Town - April

April saw 53 crimes reported to Police which comprised of the following:

Burglary x 2
Drug Offence x 1
Robbery x 1
Sexual Offences x 3
Theft x 9
Violence against the person x 15
Criminal Damage x 8
Public Order x 9
Vehicle offences x 5

When looking at the same time period over the past two years, 2015 saw 54 offences, and 2016 saw 59 offences. All crime types appeared to be in similar quantities. Crime has therefore seen ever such a slight decrease.

There have been no series of offences identified.

Westbury Town – May

May saw 50 crimes reported to Police which comprised of the following:

Burglary x 3
Drug Offence x 2
Sexual Offence x 3
Theft x 7
Violence against the person x 23
Criminal Damage x 7
Weapon Offence x 1
Public Order x 2
Vehicle offences x 2

Comparing these figures to previous years, 2015 saw 47 crimes reported, and 2016 saw 60 crimes reported. I have tried to see where the increase in Violence Against the Person has occurred since the previous month, and can see no obvious reason. There are no notifiable series of crimes or spikes in any one crime type to make residents aware of.

Westbury Villages - April

April saw 15 crimes reported to Police which comprised of the following:

Burglary x 2
Theft x 1
Violence against the person x 5
Criminal Damage x 3
Public Order x 1
Vehicle offences x 3

In comparison with previous years, 2015 saw 7 offences, and 2016 also saw 7 offences reported. So whilst for this particular month there is a significant increase in figures, when compared with the following month there isn't. I have reviewed the crime types and cannot identify any reason for the increase and there are no current concerns over series of crimes.

Westbury Villages – May

May saw 19 crimes reported to Police which comprised of the following:

Burglary x 1
Drug Offence x 1
Theft x 2

Violence against the person x 7

Criminal Damage x 5

Vehicle offences x 3

In May 2015 15 crimes were reported, and in 2016 this figure was 18. So again, we report no identified series of crimes are currently taking place in the area, and crime figures has stayed relatively stable.

When taking in to account that the number of Police Officers has been slowly decreasing, the fact that crime figures are remaining fairly consistent across these two areas is something that is pleasing to see. There is always room for improvement though, and we will continue to aim for this at all times.

OTHER INFORMATION

EVENTS... As we start to approach the Summer months, many groups and individuals start to organize various events and gatherings. A toolkit is available from Wiltshire Council which gives fantastic guidance and advice for most types of events, including topics ranging from traffic management to toilets, and gives contact details for which agencies and departments need to be contacted when applying for various licences or road closures.

It can be found at <http://www.wiltshire.gov.uk/public-events-toolkit.pdf>

In essence, all organisers must be responsible for identifying any risks and putting in measures to remove or reduce them.

SPRING IS HERE... As the warmer weather starts to appear it is tempting to throw open the windows and leave doors ajar to allow for the fresh air to flow through, BUT, this is often an open invitation to opportunistic burglars. Please do be mindful about keeping windows closed, many modern windows allow you to lock them whilst slightly ajar and I would urge you to do this if you have the capability to do so. Even if you are only in the back garden having out the washing or mowing the lawn, please ensure that your front door remains locked. Don't give these opportunists any excuse to try their luck at your property.

GOODBYE TO NEIL.... PCSO Neil Turnbull has now been assigned to Tisbury and the surrounding villages. We are continuously looking at the spread of PC's and PCSO's and so while he hasn't been replaced as yet there are still decisions being made as to whether or not this will take place. PCSO Mat Katsande remains as a Westbury Town Centre Officer, and PCSO Caroline Wright remains as the Westbury Villages Officer. I'm sure you will join me in thanking Neil for his service to the area, as he now embarks on tackling Tisbury.

For a detailed breakdown of the crime in your area visit...

<https://www.police.uk/wiltshire/>

Community Coordinator PC 1570 Amy Hardman : amy.hardman@wiltshire.pnn.police.uk

Deputy Sector Head PS 1629 Gill Hughes : gill.hughes@wiltshire.pnn.police.uk

Sector Head Insp 0041 Andy Fee : andy.fee@wiltshire.pnn.police.uk

feedback@wiltshire.police.uk